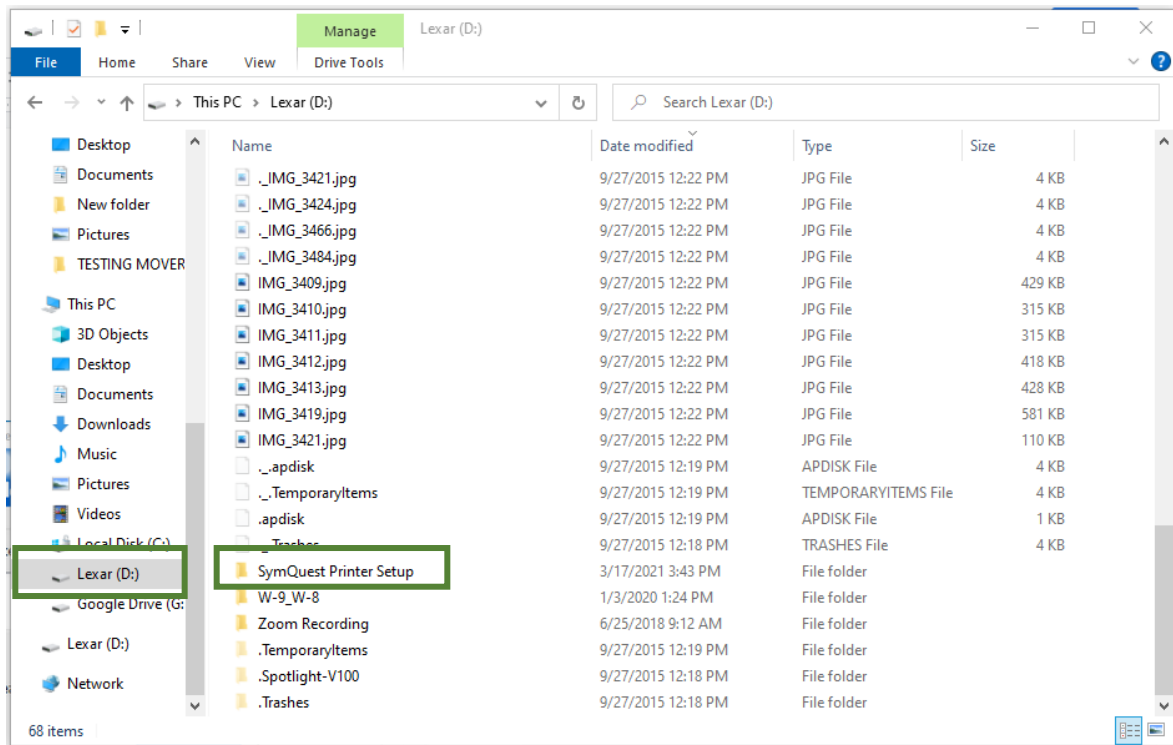
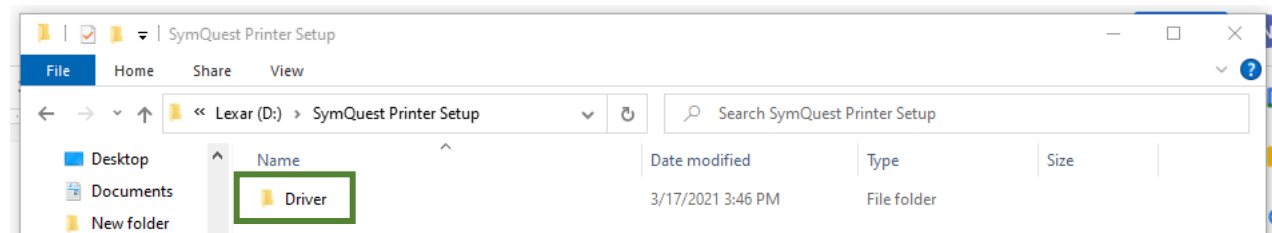


Konica Minolta Printer Setup Instructions

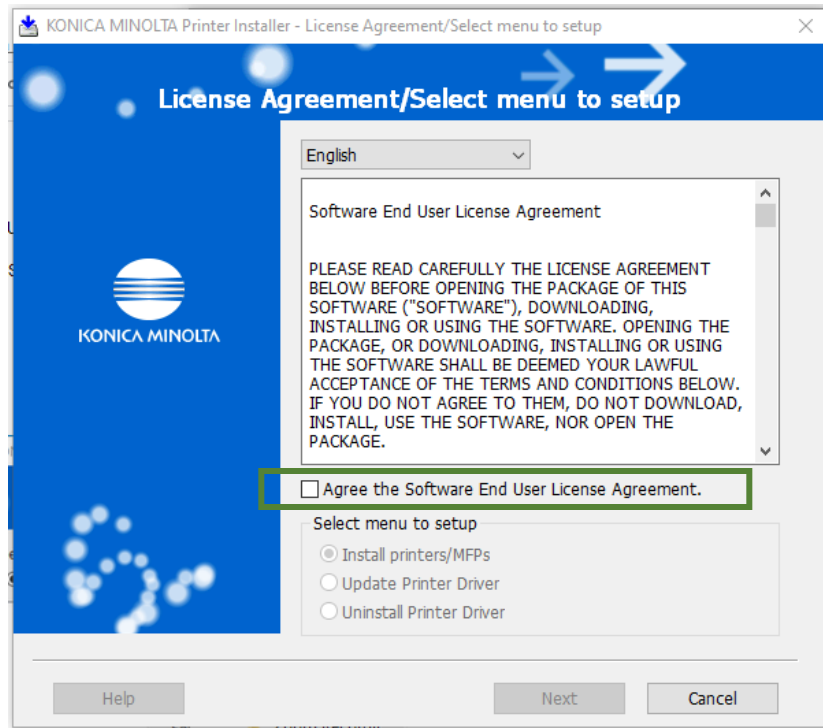
1. Plug pink Lexar USB drive into computer
2. Open the thumb drive (*File Explorer > Lexar (D:)*) and locate the **SymQuest Printer Setup** folder



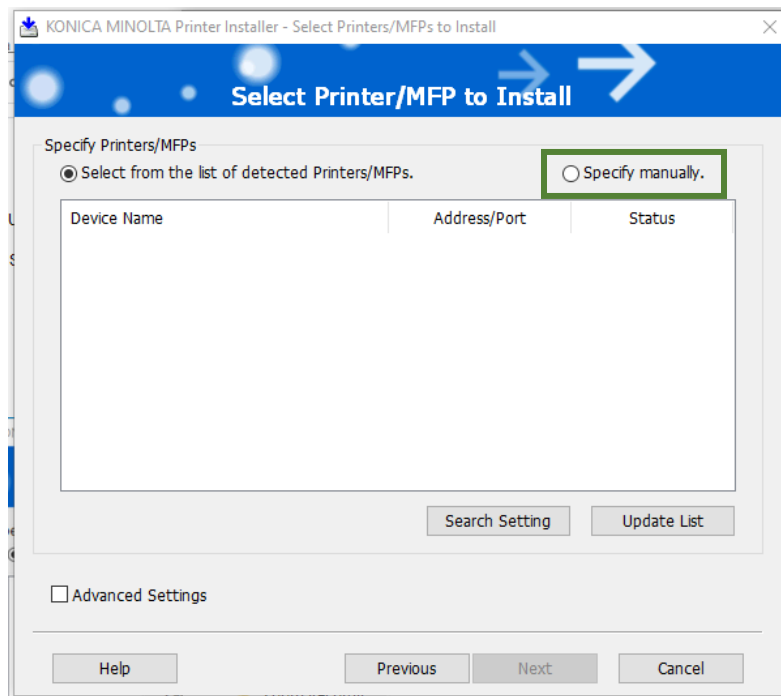
3. Double click on the **Driver** folder to open



4. Double click on the **Setup.exe** to launch the setup program
5. Click **Yes** when asked if you would like to allow this program to make changes to your computer
6. Agree to the terms and agreement



7. When the **Searching for Printers** pop-up appears, click **Cancel** and then **OK**
8. Check the **Specify Manually** bubble on the *Select Printer/ MFP to Install* window





9. Check the **IPv4,IPv6 Address/IP Host Name** option and enter the printer's IP address in the field (**172.17.20.10**)

A screenshot of the "KONICA MINOLTA Printer Installer - Select Printers/MFPs to Install" window. The window has a blue header with the title "Select Printer/MFP to Install" and a right-pointing arrow. Below the header, there are two radio buttons: "Select from the list of detected Printers/MFPs." and "Specify manually." The "Specify manually." option is selected. Under "Specify manually.", there are three sections: "Local" with a radio button and a dropdown menu showing "LPT1: Local Port"; "Network" with a radio button and a "Browse" button; and "IPv4,IPv6 Address/IP Host Name:" which is selected and has a text box containing "172.17.20.10". At the bottom, there is a checkbox for "Advanced Settings" and four buttons: "Help", "Previous", "Next", and "Cancel".

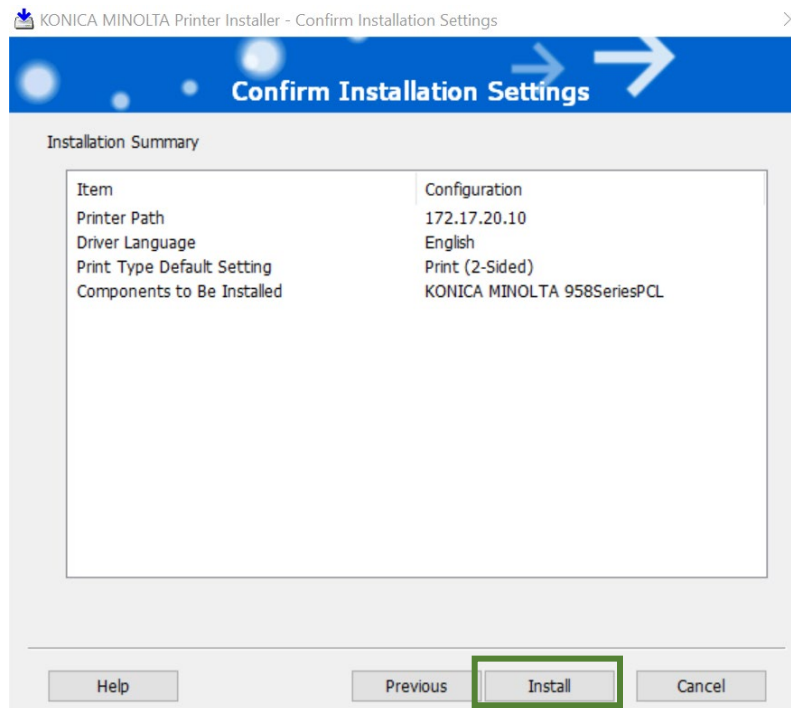
10. Click **Next**
11. From the dropdown on the *Product/Model Selection Screen*, select **KONICA MINOLTA 658eSeries (658e/558e/458e/368e/308e)**

A screenshot of the "KONICA MINOLTA Printer Installer - Product/Model Selection Screen" window. The window has a blue header with the title "Product/Model Selection Screen" and a right-pointing arrow. Below the header, there is a text prompt: "To continue the installation, select a Product/Model." Underneath, there is a dropdown menu labeled "Product/Model" which is open and shows the selected option: "KONICA MINOLTA 658eSeries (658e/558e/458e/368e/308e)". At the bottom, there are three buttons: "Previous", "Next", and "Cancel".



12. Click **Next**

13. On the *Confirm Installation Settings* screen, click **Install**



14. On the *Finish Installing Drivers* screen, click **Finish**

